

FACILITIES & FLOORPLANS

OVERVIEW

TREE HOUSE

The Tree House residence hall houses 290 MassArt students in a community-oriented residence hall. The building is smoke-free and ADA accessible. Suites offer a variety of unique floor plans from 1 to 3 bedrooms with 1 shared bathroom per suite. There are quiet spaces on each floor, encouraging the development of a close-knit community atmosphere. Wireless internet access, cable television, and all utilities are included. On the second floor you will find the Student Health Center operated by Optum Health Services and shared by MassArt, WIT and MCPHS. The third floor is called the Pajama Floor and hosts community building activities. This floor includes a game room/TV Lounge, group study room, laundry room, fitness room, vending area and a community kitchen. Students residing in the Tree House will be required to have the regular meal plan.

- All hanging artwork and wall murals in the building are student and alumni created.
- Designated areas for recycling exist in the building to allow students a convenient way to recycle both paper and co-mingled items.
- Common areas are maintained on a regular basis and our staff responds to specific maintenance requests typically within 24 hours.
- The Tree House is staffed 24 hours a day, 7 days a week by professional security and has a secure card access system in place.

FURNITURE

Listed below are the dimensions (W x L x H) for the furniture that is found in each suite in the Tree House:

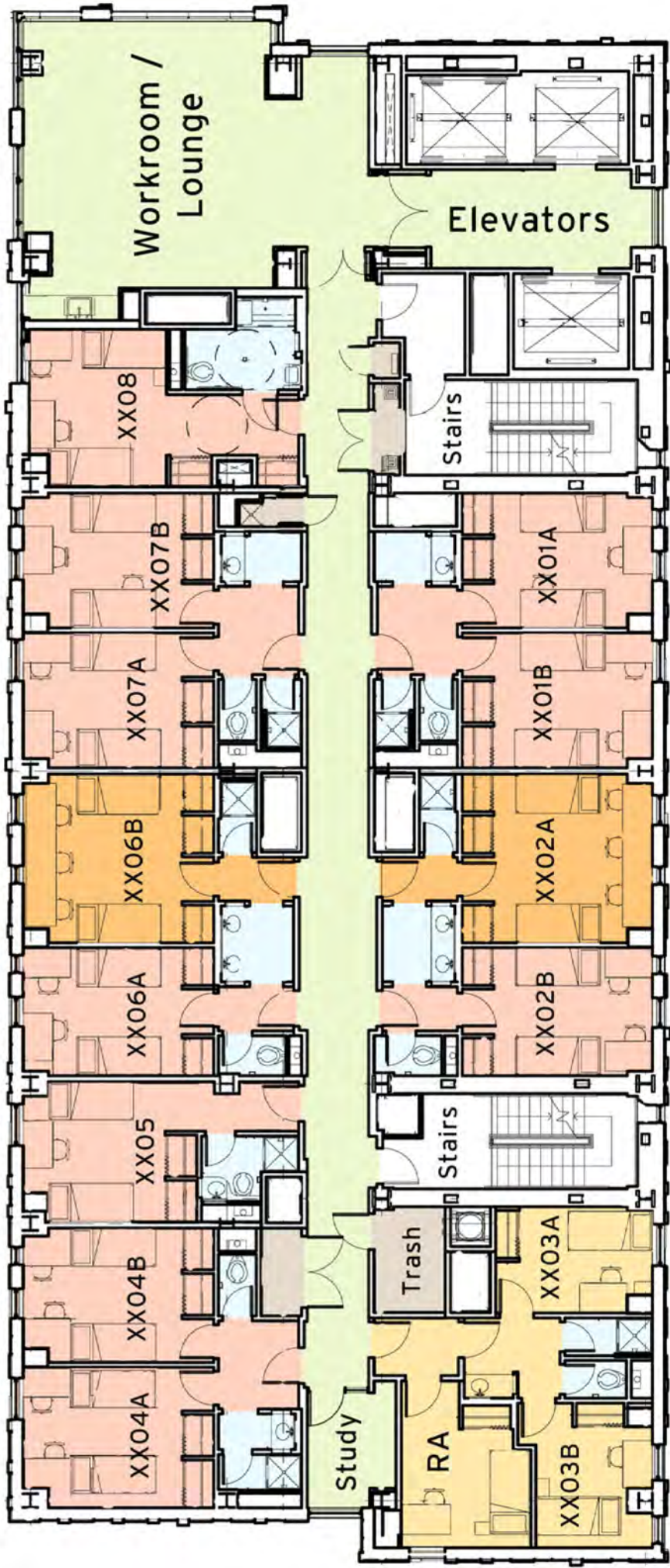
- dresser (2drawer) - 24" x 30" x 18"
- small bookshelf - 12" x 18" x 30"
- desk chair
- bed- 37" x 80 3/4" x 36"
- lofted bed - 37" x 80 3/4" x 72"
- desk- 30" x 48" x 30"

FLOOR PLANS

On the following pages you will find simplified floor plans for the Tree House. These plans are intended to give you a better understanding of the building, not to provide specific details.

MassArt students live on floors 11 - 20
 The floorplan below applies to all MassArt floors

Workrooms (odd numbered floors)
 Lounges (even numbered floors)



- SINGLE
- DOUBLE
- TRIPLE

3rd Floor Common Areas
(also known as the "Pajama Floor")

